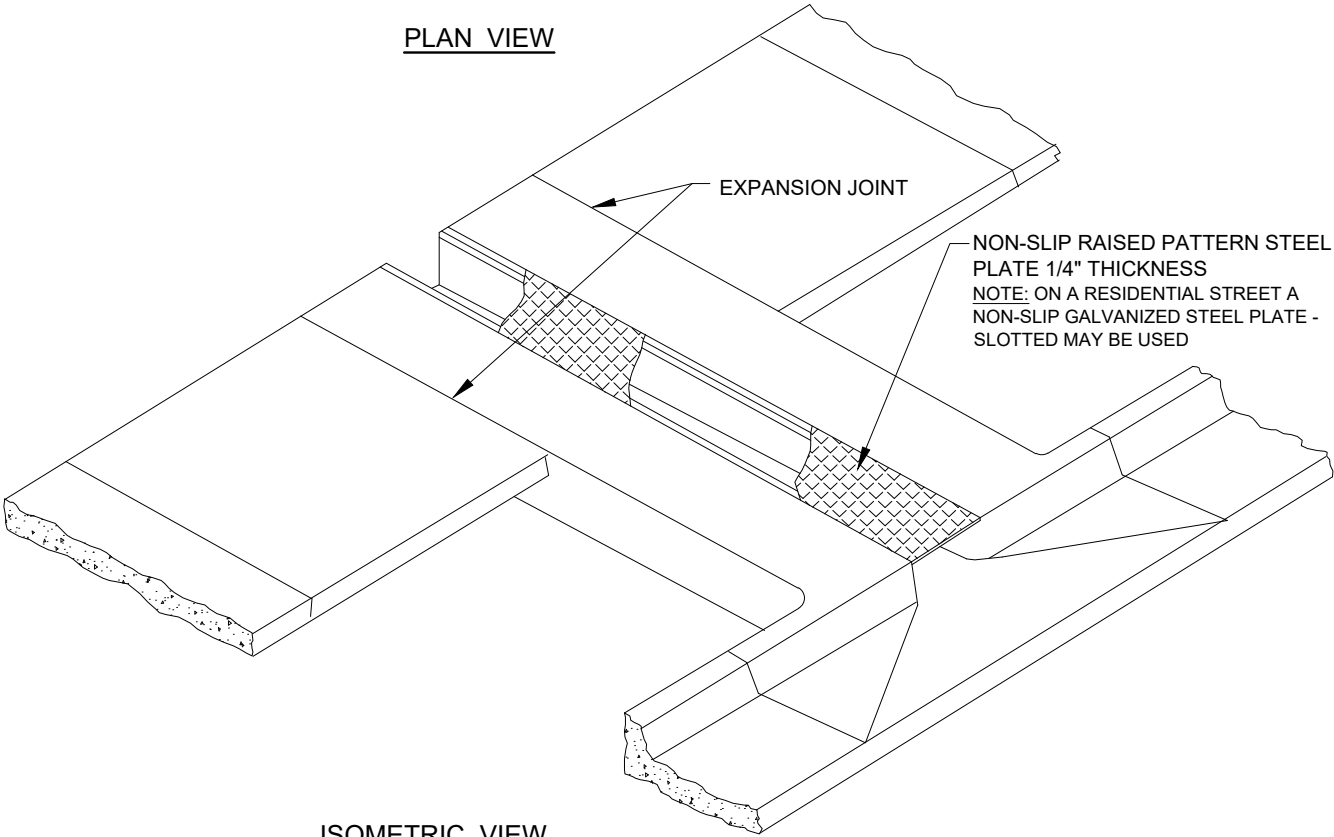


PLAN VIEW

NOTES:

- 1. CHASE IS NOT PERMITTED IN 4" CURB SECTION
- 2. CHASE SHALL ONLY BE USED WITH APPROVAL OF PROJECT ENGINEER.



ISOMETRIC VIEW

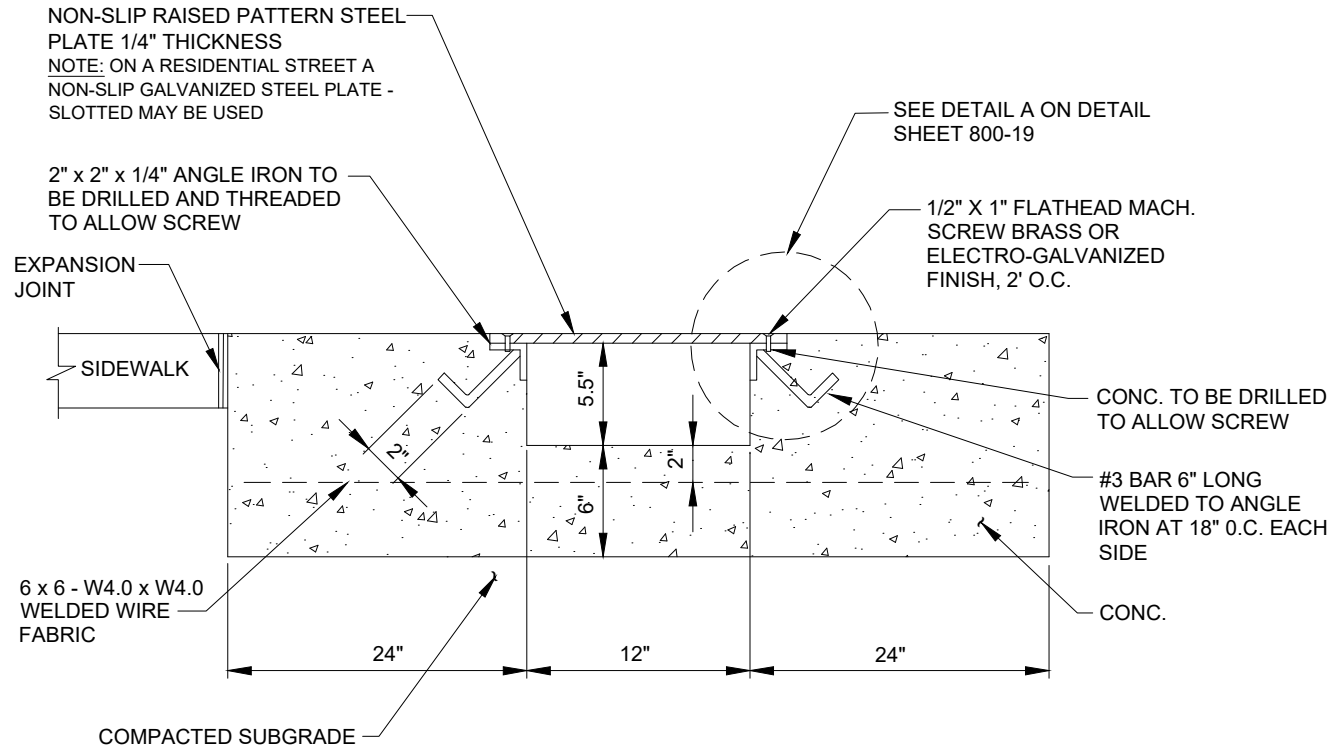
C:\CADD\DWG\DWG-PW-Eng\ENGR_SPECS\ENGR_Specs 2022\800-concrete Mix Design And Const\800-13.dwg 5/16/2022

NO	DATE	REVISION

CITY OF ARVADA
 8101 Ralston Road
 Arvada, Colorado 80002

12" SIDEWALK CHASE
 (Sheet 1 of 3)

2022 ENGINEERING STANDARDS & SPECIFICATIONS



SIDEWALK CHASE DETAIL

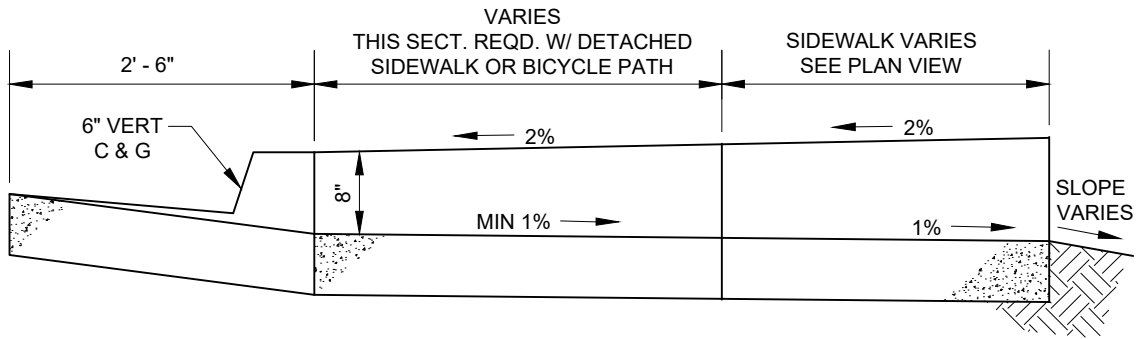
C:\CADD\DWG\DWG-ENGR_SPECS\ENGR_SPECS\CONCRETE Mix Design And Const\800-14.dwg 5/16/2022

NO	DATE	REVISION

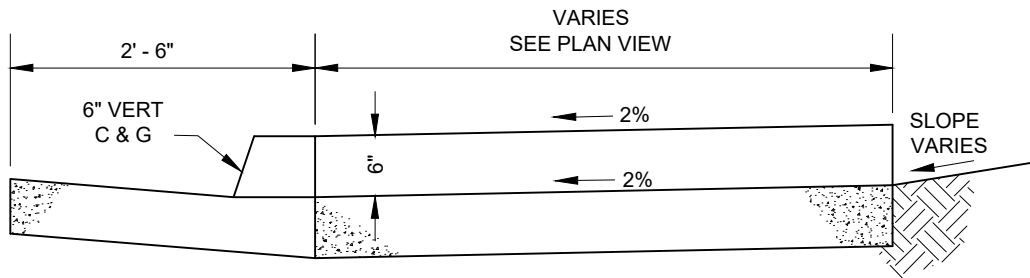
CITY OF ARVADA
8101 Ralston Road
Arvada, Colorado 80002

12" SIDEWALK CHASE
(Sheet 2 of 3)

2022 ENGINEERING STANDARDS & SPECIFICATIONS



FLOW FROM GUTTER



FLOW TO GUTTER

NON-SLIP RAISED PATTERN STEEL PLATE 1/4" THICKNESS
 NOTE: ON A RESIDENTIAL STREET A NON-SLIP GALVANIZED STEEL PLATE - SLOTTED MAY BE USED

PLATE FLUSH WITH TOP OF WALK

1 1/2"x 1 1/2"x 1/4" ANGLE IRON DRILLED & TAPPED FOR 1/4" MACHINE SCREWS

1/4"

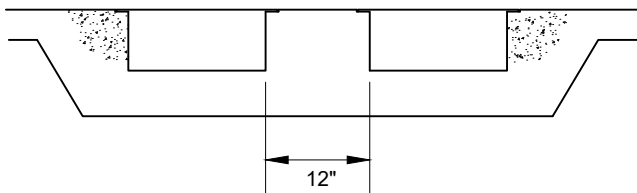
1/2"

3/16" CLEARANCE

1/4" x 3/4" F.H. MACHINE SCREWS @ 2'4" O.C. COUNTER SUNK FLUSH W/ PLATE

NO. 3 REBAR 6" LONG, WELD TO ANGLE, 18" O.C.

DETAIL A



MULTIPLE CHASE
 WHEN OPENINGS LARGER THAN 12" ARE REQUIRED

C:\CADD\DWG\DWG-Eng\ENGR_SPECS\ENGR_Specs 2022\800-concrete Mix Design And Const\800-15.dwg 5/16/2022

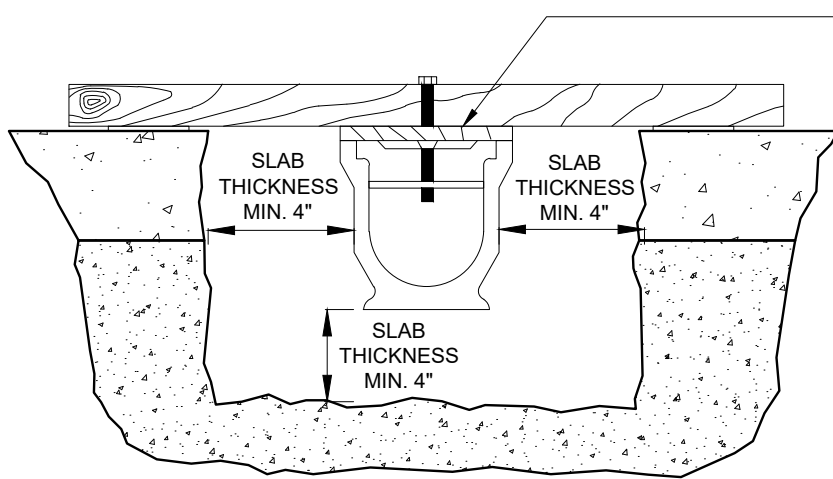
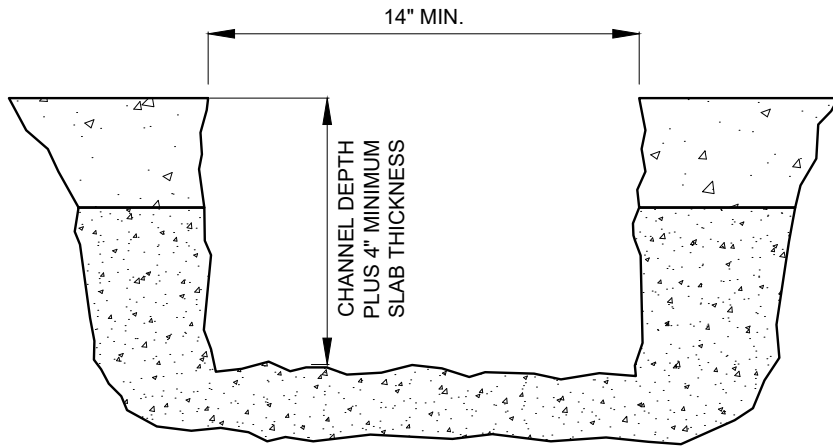
NO	DATE	REVISION



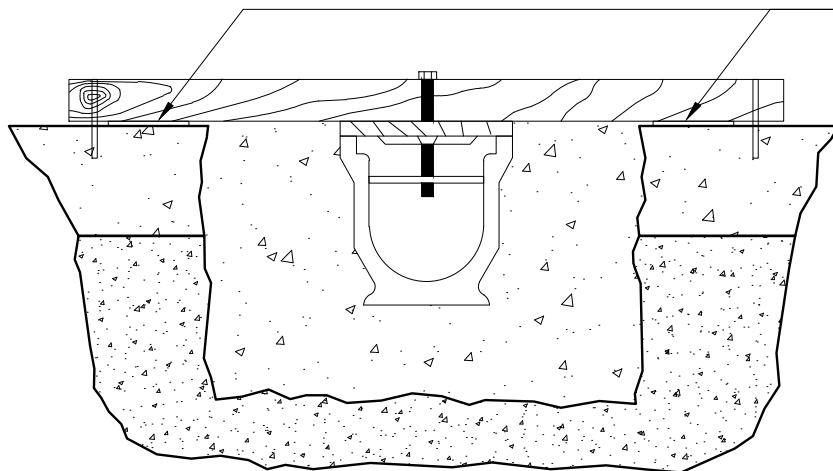
8101 Ralston Road
 Arvada, Colorado 80002

12" SIDEWALK CHASE
 (Sheet 3 of 3)

2022 ENGINEERING STANDARDS & SPECIFICATIONS



NOTE:
USE OF 1/2" SHIMS AT THE CHANNEL, AS ILLUSTRATED, WILL HELP TO PREVENT WATER PONDING ADJACENT TO THE DRAIN CHANNELS.



NOTE:
USE OF 1/4" SHIMS AT THE FLOOR, AS ILLUSTRATED, FACILITATES CONCRETE FINISHING.

G:\CAD\DWG\PW-Engr\ENGR SPECS\ENGR Specs 2022\800-concrete Mix Design And Constr\800-16.dwg 5/16/2022

NO	DATE	REVISION

CITY OF ARVADA
8101 Ralston Road
Arvada, Colorado 80002

**SIDEWALK CHASE - RETROFIT
INSTALLATION IN RESIDENTIAL AREAS**

2022 ENGINEERING STANDARDS & SPECIFICATIONS