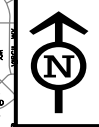


DRAFT

W. 82nd Ave (Leyden Road)



- █ 2" Mill and Overlay
- █ SMA - Stone Mastic Asphalt
- █ Reconstruction
- █ Chip Seal

G:\GIS_Data\MapDoc\Public_Works\Streets\Maintenance\2020\ST01 - Asphalt Program.mxd

- 17600 W. VIRGIL
- 17400 W. VIOLET
- 17300 W. UMBER
- 17200 W. ULYSSES
- 17100 W. TORREY
- 17000 W. TERRY
- 16900 W. SECREST
- 16800 W. SALVIA
- 16700 W. RUSSELL
- 16600 W. ROGERS
- 16500 W. QUARTZ
- 16400 W. QUAKER
- 16300 W. POPPY
- 16200 W. PIKE
- 16100 W. ORION
- 16000 W. ORCHARD
- 15900 W. NOBLE
- 15800 W. NILE
- 15700 W. MOSS
- 15600 W. MCINTYRE
- 15500 W. LUPINE
- 15400 W. LOVELAND
- 15300 W. KILMER
- 15200 W. KENDRICK
- 15100 W. JUNIPER
- 15000 W. JOYCE
- 14900 W. ISABELL
- 14800 W. INDIANA
- 14700 W. HOWELL
- 14600 W. HOLMAN
- 14500 W. GLADIOLA
- 14400 W. GARDENIA
- 14300 W. FLORA
- 14200 W. FIG
- 14100 W. ELLIS
- 14000 W. ELDRIDGE
- 13900 W. DEVINNEY
- 13800 W. DEFRAME
- 13700 W. COORS
- 13600 W. COLE
- 13500 W. BRAUN
- 13400 W. BEECH
- 13300 W. ARBUTUS
- 13200 W. ALPINE
- 13100 W. ZINNIA
- 13000 W. ZANG
- 12900 W. YANK
- 12800 W. YOUNGFIELD
- 12700 W. XENOPHON
- 12600 W. XENON
- 12500 W. WRIGHT
- 12400 W. WARD
- 12300 W. VIVIAN
- 12200 W. VAN GORDON
- 12100 W. URBAN
- 12000 W. UNION
- 11900 W. TAFT
- 11800 W. TABOR
- 11700 W. SWADLEY
- 11600 W. SIMMS
- 11500 W. ROUITT
- 11400 W. ROBB
- 11300 W. QUEEN
- 11200 W. QUAIL
- 11100 W. PIERSON
- 11000 W. PARFET
- 10900 W. OWENS
- 10800 W. OAK
- 10700 W. NEWCOMBE
- 10600 W. NELSON
- 10500 W. MOORE
- 10400 W. MILLER
- 10300 W. LEWIS
- 10200 W. LEE
- 10100 W. KUINE
- 10000 W. KIPLING
- 9900 W. JOHNSON
- 9800 W. JELLISON
- 9700 W. IRIS
- 9600 W. INDEPENDENCE
- 9500 W. HOYT
- 9400 W. HOLLAND
- 9300 W. GARLAND
- 9200 W. GARRISON
- 9100 W. FLOWER
- 9000 W. FIELD
- 8900 W. EVERETT
- 8800 W. ESTES
- 8700 W. DUDLEY
- 8600 W. DOVER
- 8500 W. CODY
- 8400 W. CARR
- 8300 W. BRENTWOOD
- 8200 W. BALSAM
- 8100 W. AMMONS
- 8000 W. ALLISON
- 7900 W. ZEPHYR
- 7800 W. YARROW
- 7700 W. YUKON
- 7600 W. WADSWORTH
- 7500 W. WEBSTER
- 7400 W. VANCE
- 7300 W. UPHAM
- 7200 W. TELLER
- 7100 W. SAULSBURY
- 7000 W. REED
- 6900 W. QUAY
- 6800 W. PIERCE
- 6700 W. OTIS
- 6600 W. NEWLAND
- 6500 W. MARSHALL
- 6400 W. LAMAR
- 6300 W. KENDALL
- 6200 W. JAY
- 6100 W. INGALLS
- 6000 W. HARLAN
- 5900 W. GRAY
- 5800 W. FENTON
- 5700 W. EATON
- 5600 W. DEFEW
- 5500 W. CHASE

Public Works Department	Engineering Division	8101 Ralston Road	Arvada, Colorado 80002	Phone 720-898-7640
PROJECT NO. 20-ST-01	ASPHALT PROGRAM - 2020	ENGINEER ? DRAWN BY C. KELLEY	DATE 2/10/2020	
SHEET OF	1 OF 1			
		REVISION	DATE	BY
		1		
		2		
		3		
		4		



PROJECT NO. 20-ST-01
ASPHALT PROGRAM - 2020